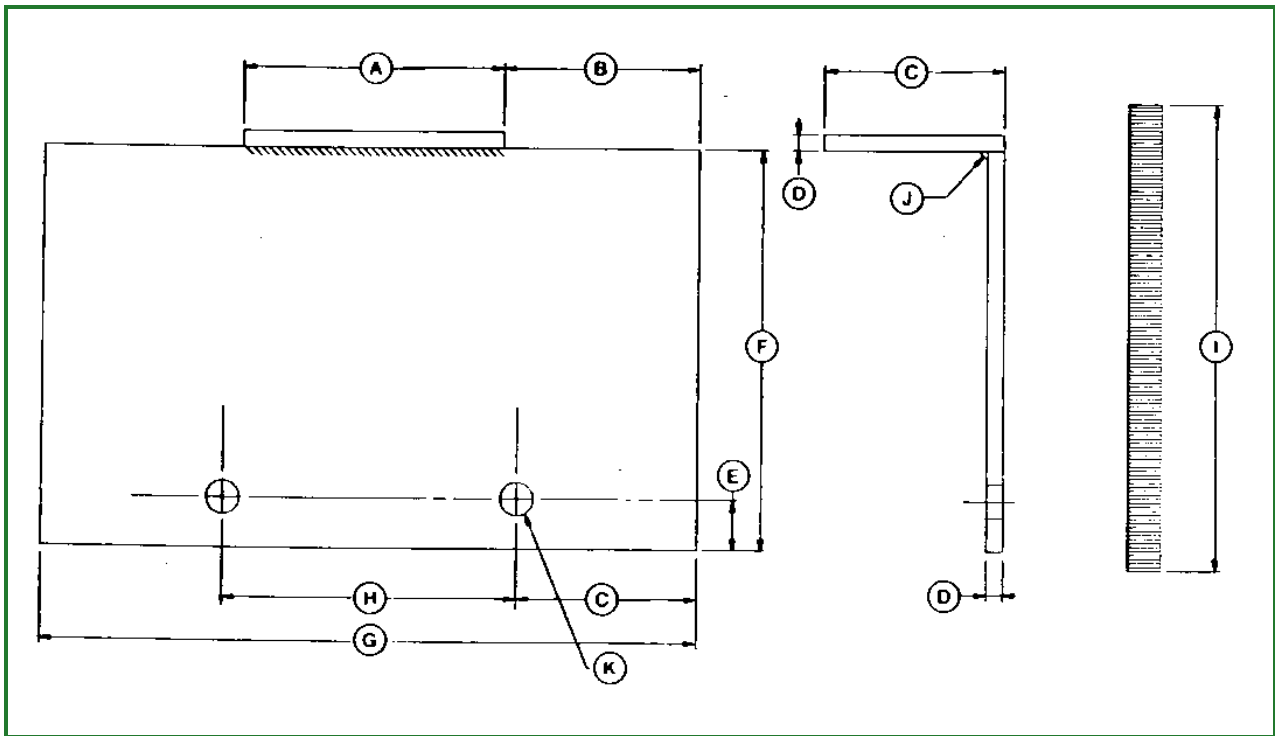


DFRW20 Compressor Holding Fixture



RW13619-UN: DFRW20 Compressor Holding Fixture

LEGEND:

- A - 102 mm (4 in.)
- B - 76 mm (3 in.)
- C - 70 mm (2.75 in.)
- D - 6.4 mm (0.25 in.)
- E - 19 mm (0.75 in.)
- F - 152 mm (6 in.)
- G - 254 mm (10 in.)
- H - 114 mm (4.5 in.)
- I - 178 mm (7 in.)
- J - Weld
- K - Two Holes

This tool is used to hold the air conditioner compressor during disassembly and assembly.

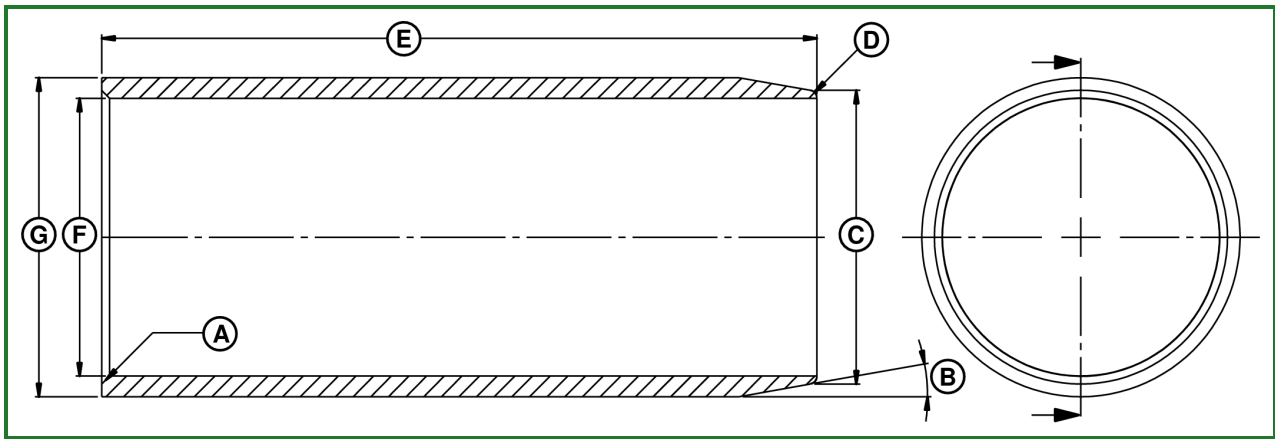
Materials required:

- Two pieces of steel plate, approximately 70 x 120 mm (2.75 x 4.75 in.) and 152 x 254 mm (6 x 10 in.)
- Two pieces of threaded rod, 13 x 178 mm (0.5 x 7 in.) long with four lock washers and nuts

Go to [Section_299:Group_05C](#)

AP43109,000062B-19-20140117

DFRW270—PTO Oil Seal Installation Sleeve



PY20919-UN: .

LEGEND:

- A - Chamfer 45° X 1 mm (0.04 in.)
- B - 10°
- C - Dia. 36.79—37.79 mm (1.45—1.49 in.)
- D - R01 mm (0.04 in.)
- E - 91 mm (3.58 in.)
- F - Dia. 35—35.50 mm (1.38—1.39 in.)
- G - Dia. 40—41 mm (1.57—1.61 in.)

Use: The sleeve is used along with the tool JDG17017 to install PTO Oil seal.

Go to [Section_299:Group_05C](#)

WS68074,000080B-19-20150901