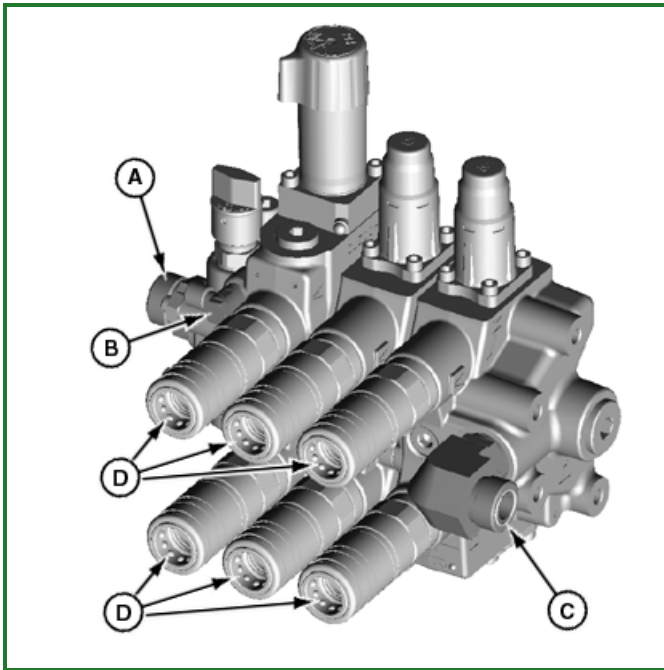


Disassemble, Inspect, and Assemble Triple Rear Selective Control Valve (SCV)

IMPORTANT:

Remove dirt, grease, and debris from valve before disassembling to prevent contamination.

Triple Rear SCV Disassemble



LV21818-UN: Triple Rear SCV with Fittings and Couplers

LEGEND:

A - Fitting

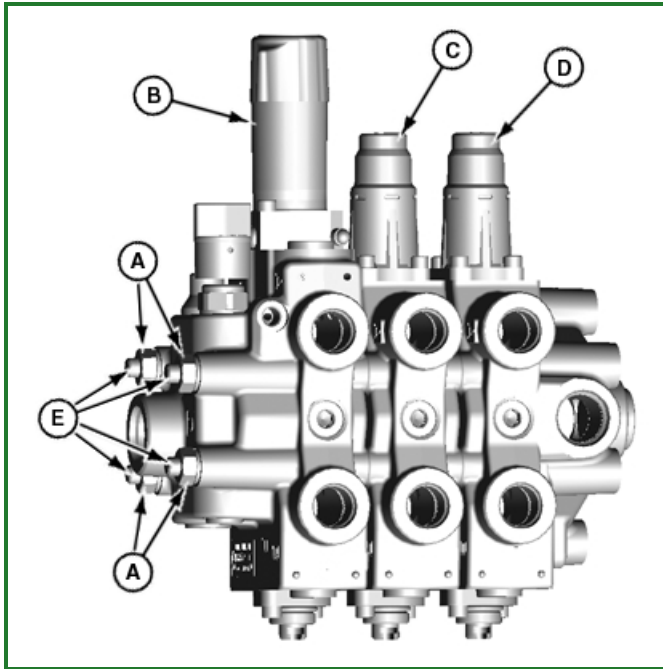
B - Elbow Fitting (Pilot)

C - Elbow Fitting

D - Quick Disconnect Coupler (6 used)

1. Remove triple rear selective control valve (SCV) from tractor. (See Remove and Install Rear Selective Control Valve (SCV) in this group.)
2. If equipped, remove coupler dust covers or dust covers with drain lines.
3. Remove quick disconnect couplers (D).
4. Remove fitting (A) and elbow fittings (B and C).

5.



LV21819-UN: Triple Rear Selective Control Valve (SCV) Sections

LEGEND:

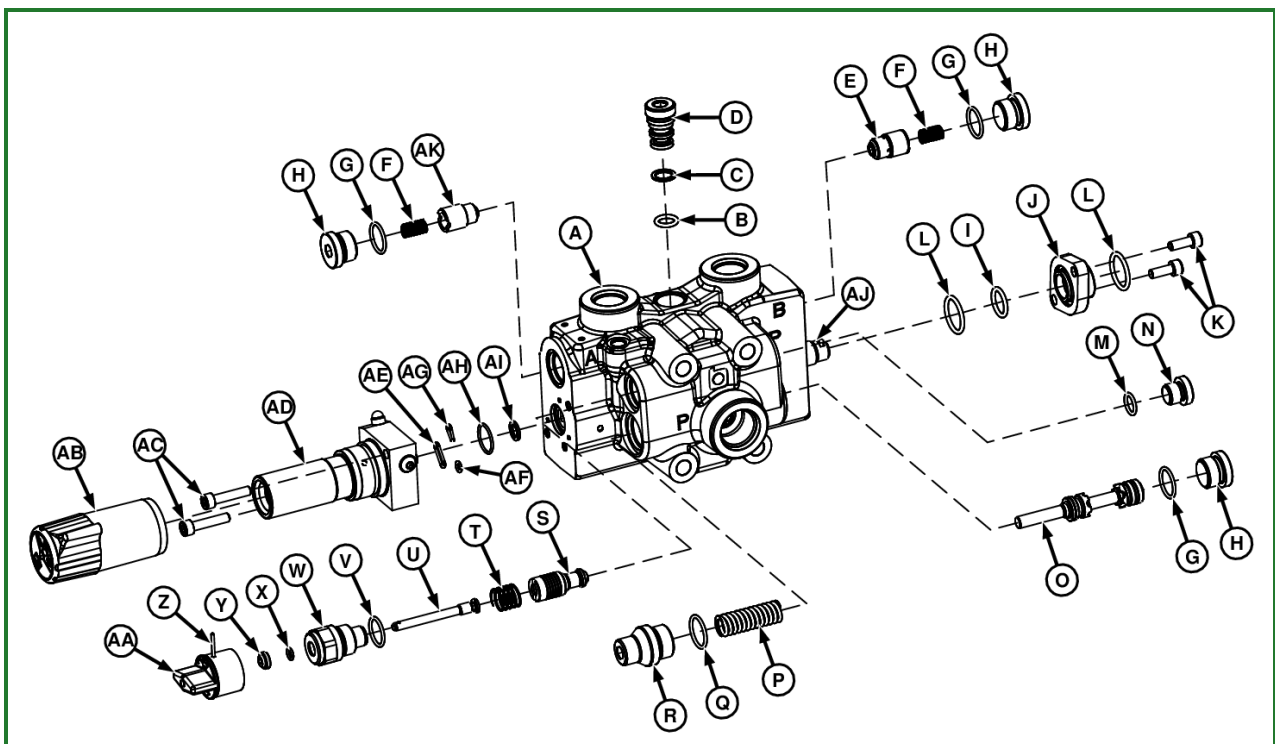
- A - Nut and Washer (4 used)
- B - Spool I Section
- C - Spool II Section
- D - Spool III Section
- E - Tie Bolt (4 used)

Remove nuts and washers (A) from tie bolts (E).

6. Separate spool I section (B), spool II section (C), and spool III section (D).

7. Remove tie bolts (E) from spool III section (D).

Spool I Section Disassemble, Inspect, and Assemble



LV21820-UN: Triple Rear SCV Spool I Section

LEGEND: