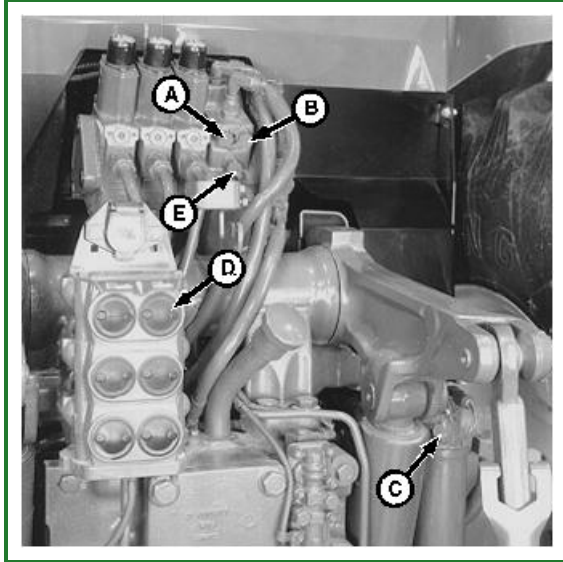


Install Test Equipment

Install Test Equipment

1 Install Test Equipment

Action:



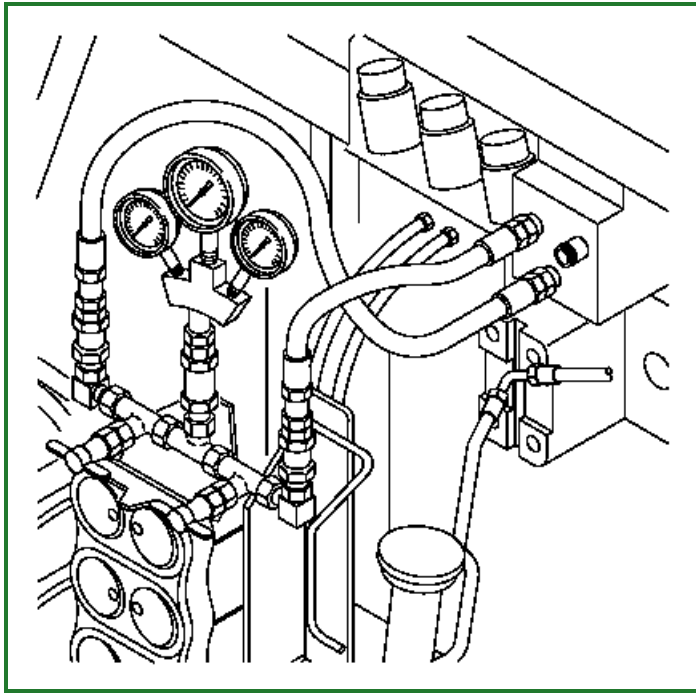
RW70729-UN: DR Locations-Later Housing

LEGEND:

- A - Load-Sense (LS) DR
- B - Priority Valve/(PR) Primary DR
- C - Main Pump Inlet DR
- D - SCV
- E - Main Pump Outlet (P) DR

NOTE:

Use JT05470 and JT07115 Pressure Kits.

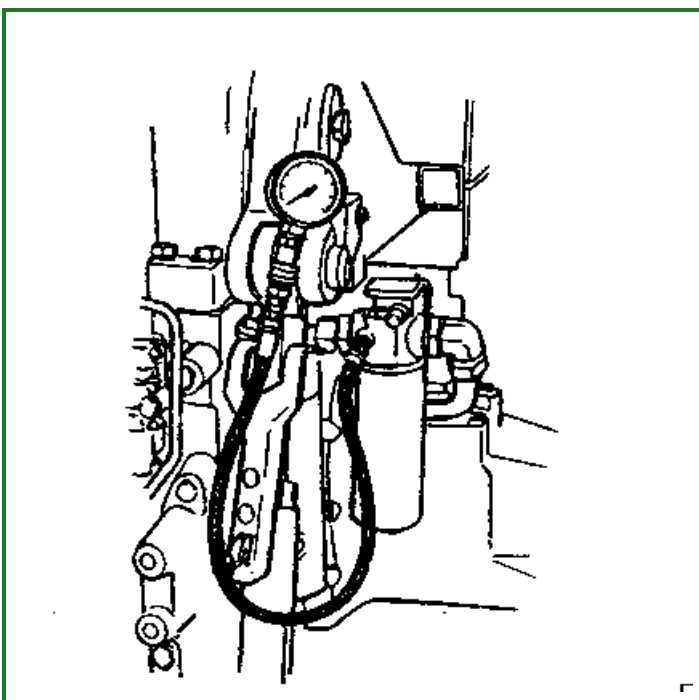


RW70345-UN: Test Connection

1. Connect JT07118 Dual Valve Manifold with JT07117 Three-Gauge Assembly to JT07119 Hoses and attach to pump outlet and load-sense DRs.
2. Connect a 400 kPa (4 bar) (60 psi) gauge, and JT07119 hose to main pump inlet DR.

NOTE:

Attach pump hose to left side and load-sense hose to right side of manifold.



RW21975-UN: Gauge Connection

2. Position gauges through rear window of cab and secure