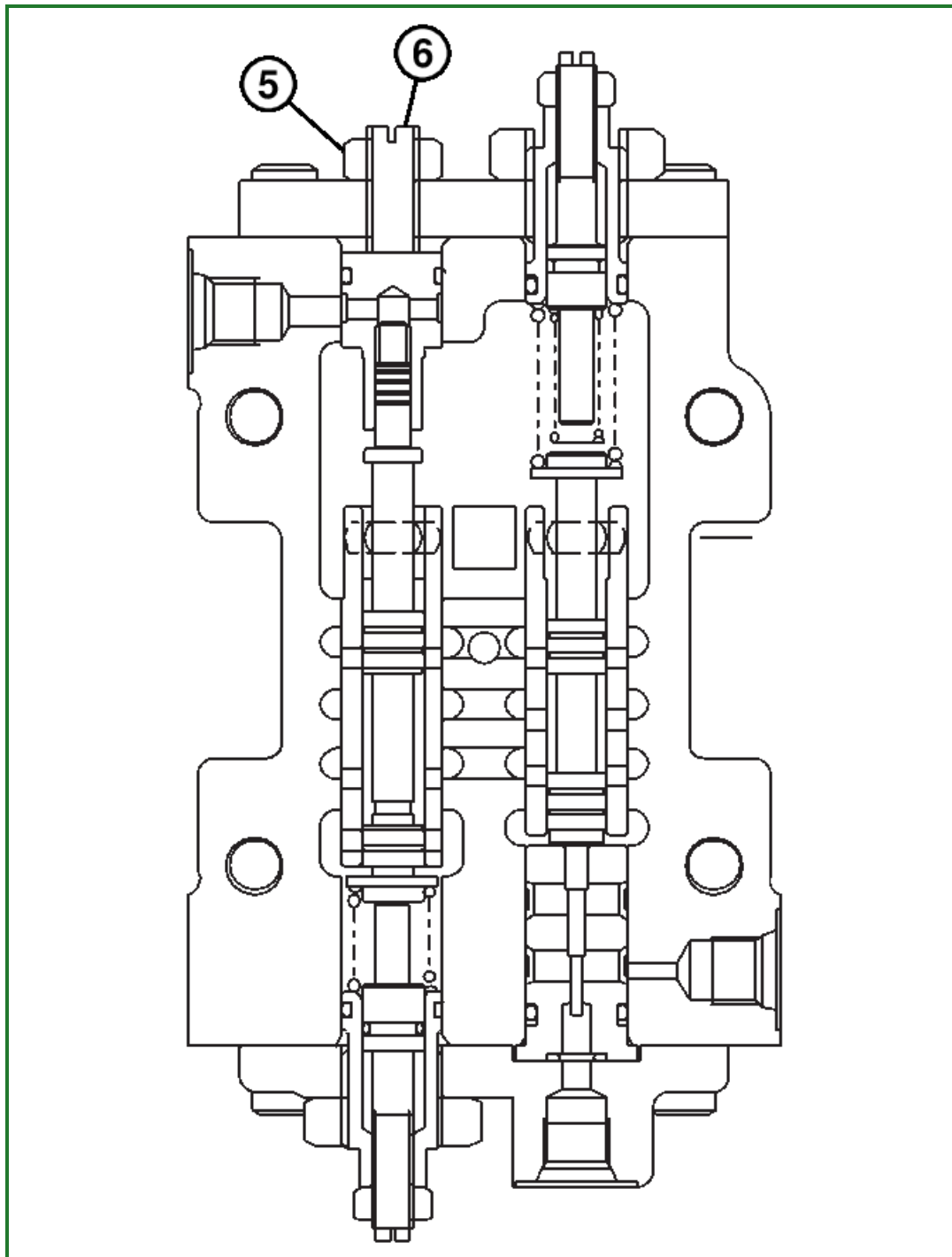


Do not turn adjusting screw more than two turns.



**T144870-UN: Regulator Minimum Flow Adjustment Screw**

**LEGEND:**

5 - 17 mm Nut

6 - Minimum Flow Adjusting Screw

Adjust the minimum flow adjusting screw (6) as needed to obtain the specified cycle time. Turn screw in to decrease the cycle time (flow rate increases), turn screw out to increase the cycle time (flow rate decreases). Hold the screw and tighten the nut (5).

Item	Measurement	Specification
Hydraulic Pump Regulator—Minimum Flow—370C		
One Revolution of Raised Track	Cycle Time	38.7—40.7 sec with pump regulator pilot line disconnected

10. Repeat procedure for other pump.

Adjust regulators so cycle times are the same.

Go to [Section\\_9025:Group\\_25](#)

TX18160,0000035-19-20140428