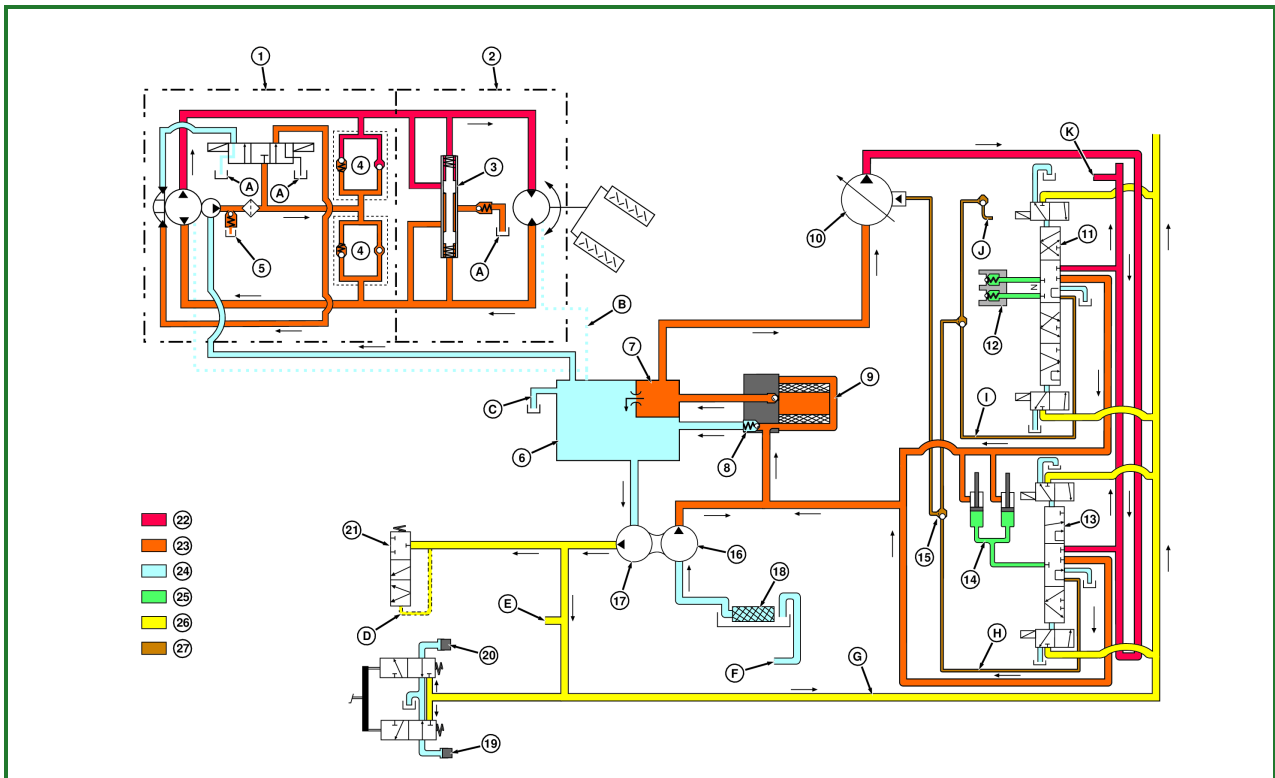


## Reference 270-25-004, Hydraulic System Diagram



## RXA0059744-UN: Hydraulic System

**LEGEND:**

- 1 - Steering Pump
- 2 - Steering Motor
- 3 - Shuttle Valve
- 4 - Multi-Function Valve
- 5 - Pressure Regulating Valve
- 6 - Large Clean Oil Reservoir
- 7 - Small Clean Oil Reservoir
- 8 - Filter Relief Valve
- 9 - Hydraulic Filter
- 10 - Secondary Pump
- 11 - SCV #1
- 12 - Coupler #1
- 13 - Hitch Valve
- 14 - Hitch Lift Cylinders
- 15 - Load Sense Shuttle Check Valve
- 16 - Charge Pump
- 17 - Primary Pump
- 18 - Sump Screen
- 19 - Right Brake Piston
- 20 - Left Brake Piston
- 21 - Transmission Pressure Regulating Valve
- 22 - Pump Supply Pressure
- 23 - Metered Pressure
- 24 - Return and Sump
- 25 - Trapped Oil
- 26 - Pilot Supply Pressure

- 27 - Load Sense
- A - To COR
- B - Case Drain
- C - Differential Lube
- D - To Transmission Lube and Control System
- E - To PTO Clutch and Brake
- F - From Transmission Scavenger Pump
- G - Pilot Oil to Hitch and SCV's
- H - Hitch Load Sense
- I - SCV #1 Load Sense
- J - SCV #2 Load Sense
- K - To Additional SCV Load Sense

Go to [Section\\_270:Group\\_25](#)

RE26679,000007D-19-13JUL04