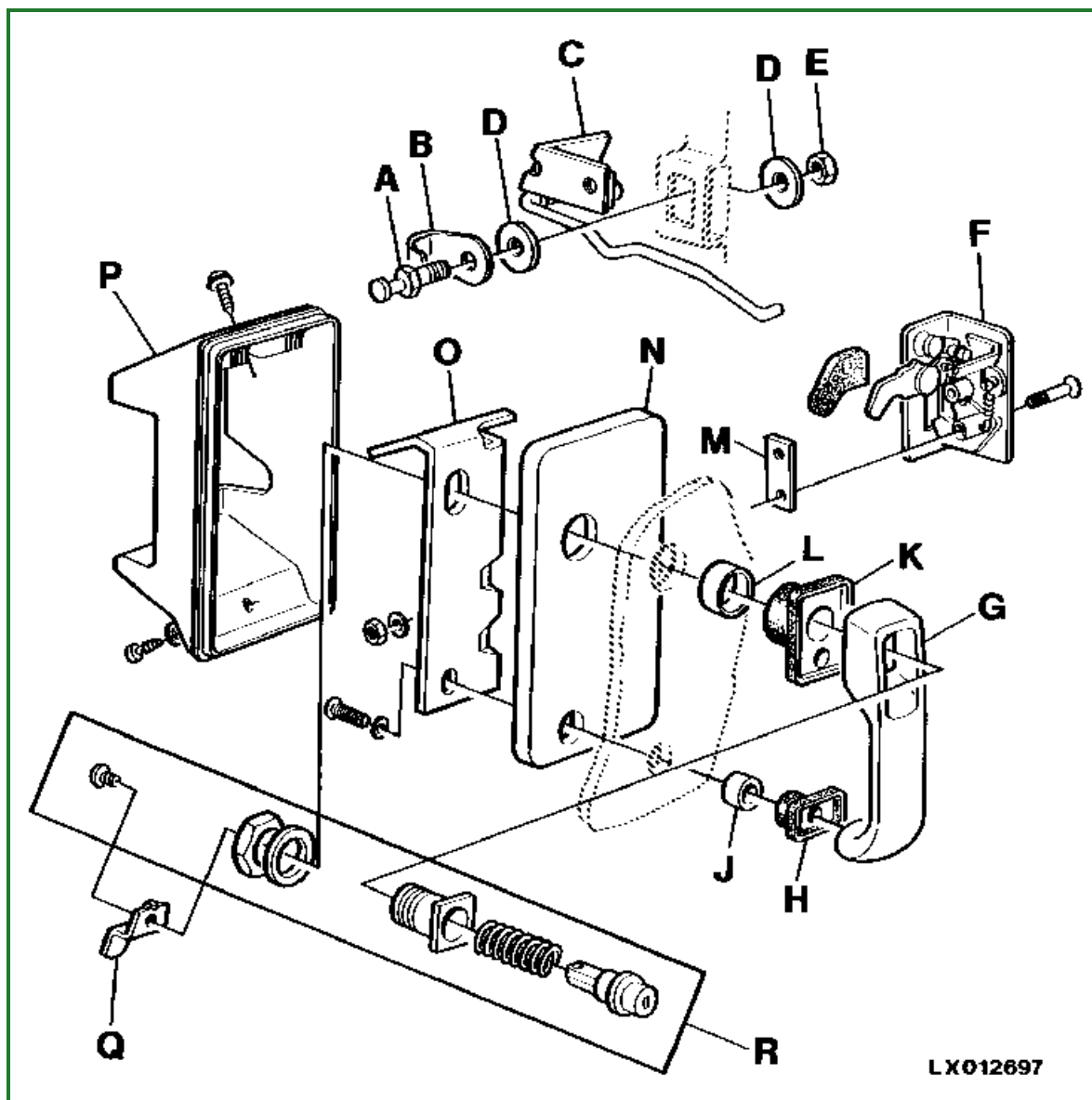


Installing Door Lock



LX012697-UN: Door Lock Assembly

LEGEND:

- A - Door lock pin
- B - Shield
- C - Door holding bracket
- D - Washer (1 or 2 used) [Without door holding bracket]
- E - Hex. nut [Without door holding bracket]
- F - Door lock
- G - Handle
- H - Spacer
- J - Spacer bushing
- K - Spacer
- L - Spacer bushing
- M - Strap [If equipped]
- N - Gasket
- O - Console
- P - Cover
- Q - Locking strap

R - Locking cylinder

Loosen hex. nut (E). Adjust tension of cab door by moving door lock pin (A) until some effort is needed to pull out paper strips placed between cab frame and seal.

Tighten door lock pin (A) to 90 N·m (65 lb-ft). On doors without door holding bracket (C), hold hex. nut (E).

Go to [Section_90:Group_25](#)

LX,9025 004275-19-1997/04/01