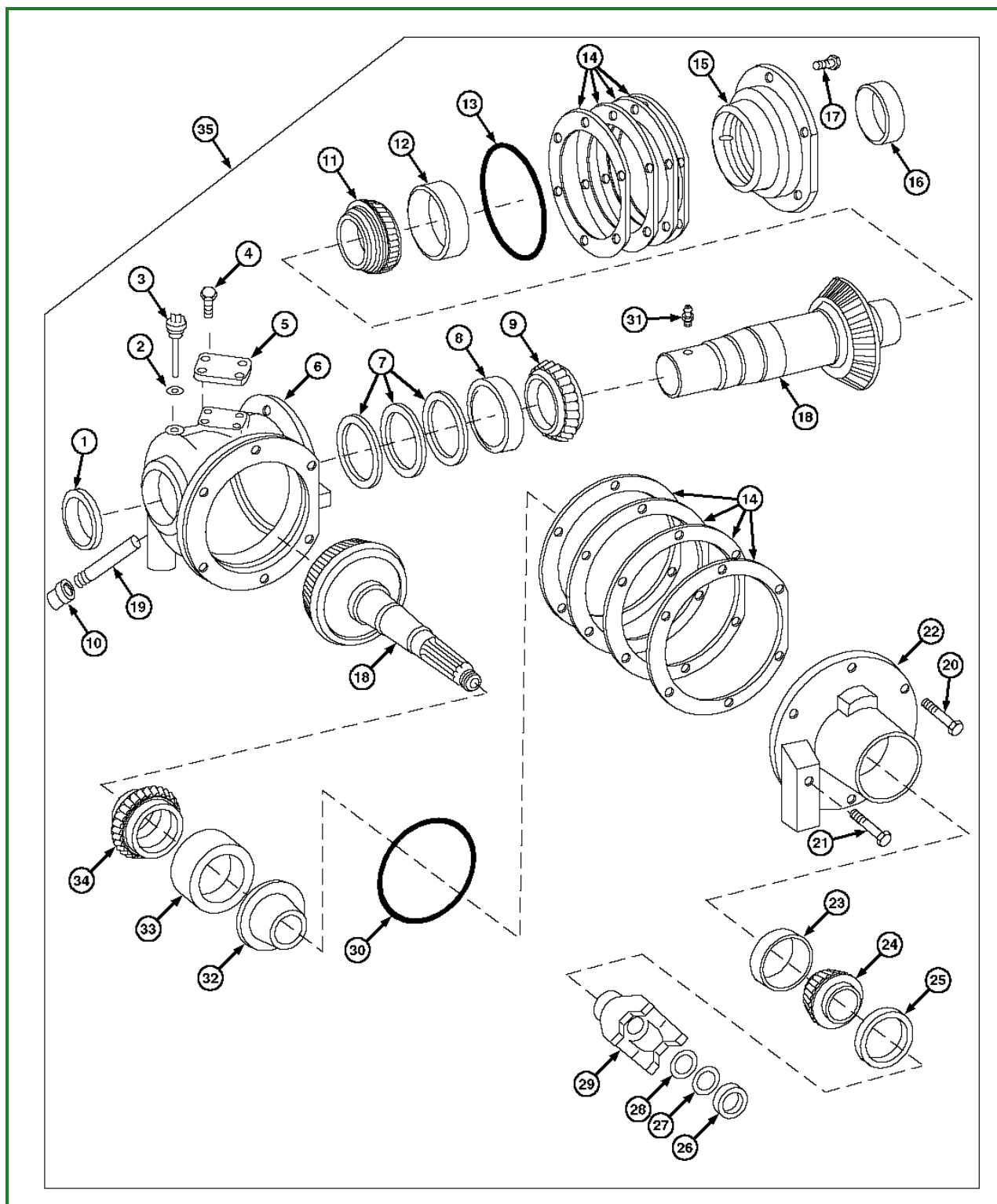


Disassemble and Assemble Primary Countershaft Gear Case



H53025-UN: Gear Case

LEGEND:

- 1 - Seal
- 2 - O-Ring
- 3 - Dipstick
- 4 - Screw (4 used)
- 5 - Cover
- 6 - Gear Case
- 7 - Shims (as required)
- 8 - Bearing Cup

- 9 - Bearing Cone
- 10 - Fitting
- 11 - Bearing Cone
- 12 - Bearing Cup
- 13 - Ring
- 14 - Shims (as required)
- 15 - Housing
- 16 - Seal
- 17 - Screw (6 used)
- 18 - Gear
- 19 - Threaded Nipple
- 20 - Screw (5 used)
- 21 - Screw
- 22 - Housing
- 23 - Bearing Cup
- 24 - Bearing Cone
- 25 - Seal
- 26 - Nut
- 27 - Lock Washer
- 28 - Lock Washer
- 29 - Yoke
- 30 - Ring 177.1 x 5.3 mm
- 31 - Lubrication Fitting
- 32 - Retainer
- 33 - Bearing Cup
- 34 - Bearing Cone
- 35 - Gear Case

1. Drain gear case.

Item	Measurement	Specification
Primary Countershaft Gear Case	Capacity	1.2 L (2.5 pt)

2.

⚠ CAUTION:

The approximate weight of gear case is 52 kg (115 lb).

NOTE:

Gears are a matched set and must be replaced as a set.